



GAS COOKTOP INSTALLATION GUIDE

GUÍA DE INSTALACIÓN

GUIDE D'INSTALLATION

GUIDA ALL'INSTALLAZIONE

INSTALLATIONSANLEITUNG

INSTALLATIEHANDLEIDING

安装指南



Contents

- 2 Gas Cooktop
- 3 Specifications
- 5 Installation
- 5 Troubleshooting

Features and specifications are subject to change at any time without notice. Visit wolfappliance.com/specs for the most up-to-date information.

Important Note

To ensure this product is installed and operated as safely and efficiently as possible, take note of the following types of highlighted information throughout this guide:

IMPORTANT NOTE highlights information that is especially important.

CAUTION indicates a situation where minor injury or product damage may occur if instructions are not followed.

WARNING states a hazard that may cause serious injury or death if precautions are not followed.

IMPORTANT NOTE: Save these instructions for the local electrical inspector.

⚠ WARNING

This appliance shall be installed in accordance with the regulations in force and only used in a well ventilated space. Read the instructions before installing or using this appliance.

⚠ WARNING

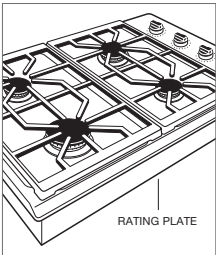
FOR AUSTRALIA ONLY:

- Do not use or store flammable materials in the appliance storage drawer or near this appliance.
- Do not spray aerosols in the vicinity of this appliance while in operation.
- Do not modify this appliance.
- This appliance is for indoor use only.
- A ventilation unit is suggested for use with this appliance. Refer to the instructions shipped with the ventilation unit for proper clearances.
- If the information in the guide is not followed, a fire or explosion may result, causing property damage, personal injury or death.
- This appliance must be properly installed and serviced by a qualified installer, service agency or gas supplier and grounded (earthed) by a qualified technician.

Product Information

Important product information including the model and serial number are listed on the product rating plate. The rating plate is located on the bottom of the cooktop. Refer to the illustration below.

If service is necessary, contact Wolf factory certified service with the model and serial number.



Rating plate location.

Installation Requirements

If a cooktop is being installed above an oven, a minimum of 6 mm is required between units. A minimum 140 mm is required from the bottom of the cooktop to combustible materials.

Electrical

Installation must comply with all applicable electrical codes.

Locate the electrical supply as shown in the illustrations on page 4. A separate circuit, servicing only this appliance is required. A ground fault circuit interrupter (GFCI) is not recommended and may cause interruption of operation.

ELECTRICAL REQUIREMENTS	
Electrical Supply	grounded (earthed) 220-240 V AC, 50/60 Hz
Service	10 amp dedicated circuit
Receptacle	grounding-type (earthed)

IMPORTANT NOTE: Connection of this appliance should be through a fused connection unit or a suitable isolator, which complies with national and local safety regulations. The on/off switch should be easily accessible after the appliance has been installed. If the switch is not accessible after installation (depending on country) an additional means of disconnection must be provided for all poles of the power supply. When switched off there must be an all pole contact gap of 3 mm in the isolator switch. This 3 mm contact disconnect gap must apply to any isolator switch, fuses and/or relays according to EN60335.

⚠ WARNING

FOR AUSTRALIA ONLY:

This appliance is supplied with a cord and can be hard wired to a terminal box or plug. Do not remove the ground (earthed) plug.

The diagram shows a standard three-prong electrical plug. The top two prongs are horizontal and labeled 'N (BLUE)' on the left and 'P (BROWN)' on the right. The bottom prong is vertical and labeled 'E (GREEN/YELLOW)'.

SPECIFICATIONS

Gas Supply

Installation must conform with local codes and ordinances.

Locate the gas supply as shown in the illustrations on page 4.

The cooktop is equipped for use with natural or liquid propane (LP) gas. The product rating plate has information on the type of gas that should be used. For rating plate location, refer to the illustration below. If this information does not agree with the type of gas available, check with the local gas supplier.

Prior to installation, ensure that the local distribution conditions (nature of the gas and gas pressure) and the adjustment of the appliance are compatible. The adjustment conditions for this appliance are stated on the label (or rating plate). The data plate can be found on the underside of the cooktop.

This appliance is not connected to a combustion products evacuation device. It shall be installed and connected in accordance with current installation regulations. Particular attention shall be given to the relevant requirements regarding ventilation.

The cooktop must be connected to a regulated gas supply. The supply line must be equipped with an approved external gas shut-off valve located near the cooktop in an accessible location. Do not block access to the shut-off valve. Refer to the illustration below.

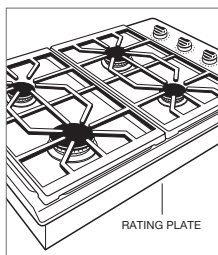
GAS SUPPLY REQUIREMENTS

NATURAL GAS

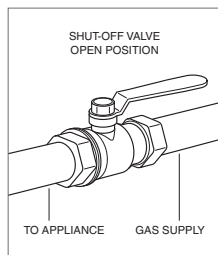
Gas Supply Pressure	12.5 mb
Min Line Pressure	17.5 mb
Max Pressure to Regulator	100 mb

LP GAS

Gas Supply Pressure	25 mb
Min Line Pressure	27.4 mb
Max Pressure to Regulator	100 mb



Rating plate location.



Gas shut-off valve.

GAS RATING					
MODEL	TOTAL HEAT OUTPUT	GAS UNITS	APPLIANCE CATEGORY	TYPES AND PRESSURE (mbar)	COUNTRY OF DESTINATION
ICBCG152T/S	6.2	kW	I2H	G20 at 20	AT, CZ, DK, FI, GR, HR, IS, IE, IT, PT, SK, SI, ES, SE, CH, TR, GB, EE, LV, LT, NO, RO
			I2E	G20 at 20	DE, LU
			I2E+	G20 at 20/25	BE, FR
ICBCG152T/S/LP	6.2 (443)	kW (g/h)	I3P	G31 at 37	CH, CZ, DE, IT, ES, FI, GR, GB, NL, SK, IE, SI, RO, PL, LV, LT
ICBCG304T/S	14.2	kW	I2H	G20 at 20	AT, CZ, DK, FI, GR, HR, IS, IE, IT, PT, SK, SI, ES, SE, CH, TR, GB, EE, LV, LT, NO, RO
			I2E	G20 at 20	DE, LU
			I2E+	G20 at 20/25	BE, FR
ICBCG304T/S/LP	14.2 (1014)	kW (g/h)	I3P	G31 at 37	CH, CZ, DE, IT, ES, FI, GR, GB, NL, SK, IE, SI, RO, PL, LV, LT
ICBCG304P/S	14.2	kW	I2H	G20 at 20	AT, CZ, DK, FI, GR, HR, IS, IE, IT, PT, SK, SI, ES, SE, CH, TR, GB, EE, LV, LT, NO, RO
			I2E	G20 at 20	DE, LU
			I2E+	G20 at 20/25	BE, FR
ICBCG304P/S/LP	14.2 (1014)	kW (g/h)	I3P	G31 at 37	CH, CZ, DE, IT, ES, FI, GR, GB, NL, SK, IE, SI, RO, PL, LV, LT
ICBCG365T/S	16.9	kW	I2H	G20 at 20	AT, CZ, DK, FI, GR, HR, IS, IE, IT, PT, SK, SI, ES, SE, CH, TR, GB, EE, LV, LT, NO, RO
			I2E	G20 at 20	DE, LU
			I2E+	G20 at 20/25	BE, FR
ICBCG365T/S/LP	16.9 (1207)	kW (g/h)	I3P	G31 at 37	CH, CZ, DE, IT, ES, FI, GR, GB, NL, SK, IE, SI, RO, PL, LV, LT
ICBCG365P/S	16.9	kW	I2H	G20 at 20	AT, CZ, DK, FI, GR, HR, IS, IE, IT, PT, SK, SI, ES, SE, CH, TR, GB, EE, LV, LT, NO, RO
			I2E	G20 at 20	DE, LU
			I2E+	G20 at 20/25	BE, FR
ICBCG365P/S/LP	16.9 (1207)	kW (g/h)	I3P	G31 at 37	CH, CZ, DE, IT, ES, FI, GR, GB, NL, SK, IE, SI, RO, PL, LV, LT

GAS RATING—AUSTRALIA ONLY

MODEL	GAS TYPE	GAS PRESSURE	MEGAJoule	ULTRA RAPID	RAPID	SEMI RAPID
ICBCG152	Natural	1.0 kPa	21	N/A	1.64 / .68 mm	1.40 / .65 mm
	LP	2.75 kPa	22	N/A	1.21 / .47 mm	1.00 / .41 mm
ICBCG304	Natural	1.0 kPa	47.3	2.05 / .79 mm	1.59 / .65 mm	1.40 / .65 mm
	LP	2.75 kPa	47.8	1.18 / .47 mm	.94 / .47 mm	.82 / .41 mm
ICBCG365	Natural	1.0 kPa	56.4	2.05 / .79 mm	1.59 / .65 mm	1.40 / .65 mm
	LP	2.75 kPa	56.9	1.18 / .47 mm	.94 / .47 mm	.82 / .41 mm

A gas supply line of 19 mm rigid pipe must be provided to the cooktop. If local codes permit, a certified, .9 m long, 13 mm or 19 mm ID flexible metal appliance connector is recommended to connect the units 1/2" NPT (or ISO 7/1-14) male inlet to the gas supply line. Pipe joint compounds, suitable for use with natural or LP gas should be used.

The appliance and its shut-off valve must be disconnected from the gas supply piping system during any pressure testing of the system at test pressures in excess of 100 mbar. The appliance must be isolated from the gas supply piping system by closing its individual manual shut-off valve during any pressure testing of the system at test pressures equal to or less than 100 mbar.

Wolf natural gas cooktops will function up to 3124 m in altitude without adjustment and LP gas cooktops will function up to 2621 m. If the installation exceeds these elevations, contact your authorized Wolf dealer for a high altitude conversion kit.

⚠ WARNING

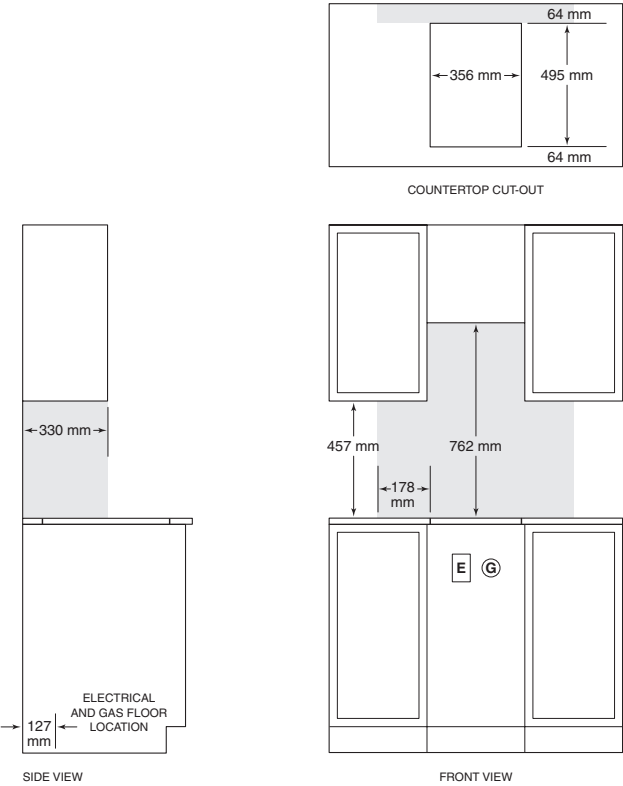
FOR AUSTRALIA ONLY:

- The appliance must be connected to a regulated gas supply with an approved regulator.
- This appliance can be installed using a 10 mm diameter 1000 mm flexible hose assembly complying with AS/NZS 1869, Class 'B'. Maximum working pressure 14 kPa, ambient temperature: -20°C to 125°C and AGA approved. The hose is not provided with the appliance.
- If installing with a flexible hose, verify the hose is not kinked or can be damaged. If installing above and oven, use a hose that will not be damaged by the heat from the oven.
- Failure to locate this appliance without proper clearances will result in a fire hazard.
- Adjust the inlet pressure regulator until the test point pressure is 1 kPa for NG and 2.75 kPa for Propane with 2 semi rapid burners set at maximum rate. Apply the self-adhesive data plate provided. It is the responsibility of the installer to test the operation of the cooktop upon completion and leave this manual with the product.

SPECIFICATIONS

381 mm Gas Cooktop

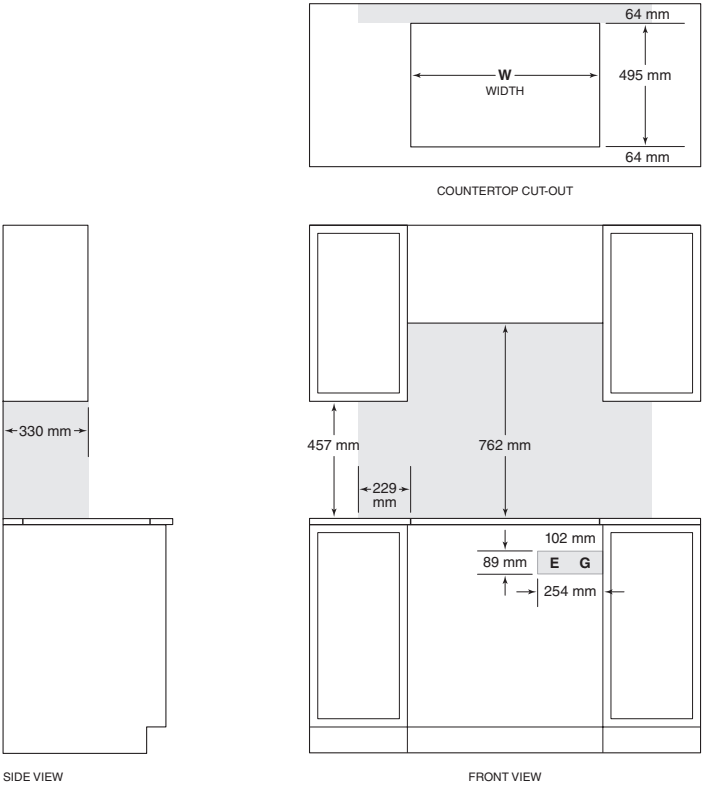
STANDARD INSTALLATION



NOTE: Shaded area above countertop indicates minimum clearance to combustible surfaces, combustible materials cannot be located within this area.

762 mm and 914 mm Gas Cooktop

STANDARD INSTALLATION



NOTE: Shaded area above countertop indicates minimum clearance to combustible surfaces, combustible materials cannot be located within this area.
Electrical and gas supply location only applies to installations with built-in oven.

CUT-OUT WIDTH	
MODEL	W
762 mm Cooktop	737 mm
914 mm Cooktop	889 mm

INSTALLATION

Cooktop Installation

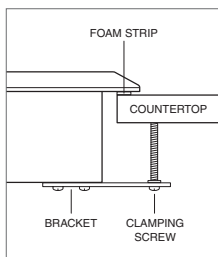
Remove cooktop and components from the shipping package and recycle packing materials.

Lower the cooktop into the countertop cut-out. Center cooktop in the opening with the front edge aligned parallel to the front edge of the countertop. Using a pencil, outline the rear edge of the cooktop on the countertop. Remove cooktop.

Apply the foam strip provided, to the perimeter of the countertop opening. Refer to the illustration below. Do not seal the cooktop to the countertop.

Insert the cooktop into the opening. Verify the cooktop is aligned with the front edge of the countertop.

Attach the brackets provided, to the bottom of the unit. Insert the 89 mm clamping screws into the brackets. Use a screwdriver to tighten clamping screws against the bottom of the countertop. Do not overtighten screws. Refer to the illustration below.



Cooktop installation.

Gas Supply Connection

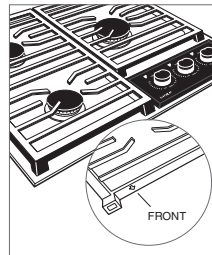
All connections to the gas piping must be wrench-tightened. Do not overtighten or allow pipes to turn when tightening.

If a flexible metal connector is being used, verify it is not kinked, then attach the gas supply line to the regulator on the cooktop. Open the valve and check for leaks by placing a liquid detergent solution onto all gas connections. Bubbles around connections indicate a gas leak. If a leak appears, close the shut-off valve and adjust connections.

Burner Grates

610 mm MODEL

For 610 mm models, the grates must be positioned correctly to ensure proper burner performance. The grates have an indicator on the bottom of the front edge. Position the grates with the indicator toward the front of the cooktop. Refer to the illustration below.



Grate placement (610 mm model).

Troubleshooting

IMPORTANT NOTE: If the cooktop does not operate properly, follow these troubleshooting steps:

- Verify electrical power is supplied to the cooktop.
- Verify the gas supply shut-off valve is in the open position.
- If the cooktop does not operate properly, contact Wolf factory certified service. Do not attempt to repair the cooktop. Wolf is not responsible for service required to correct a faulty installation.